



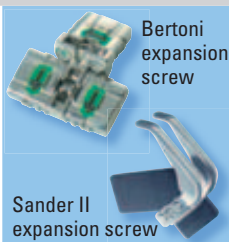
# Take advantage of memory technology

## Memory Screws for intelligent expansion

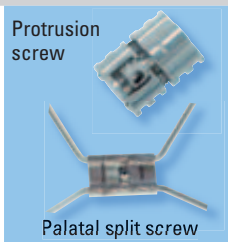
Exclusively from  
Forestadent



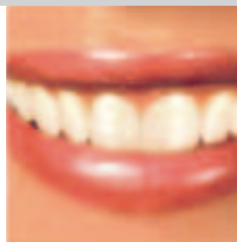
Mid line expansion screw



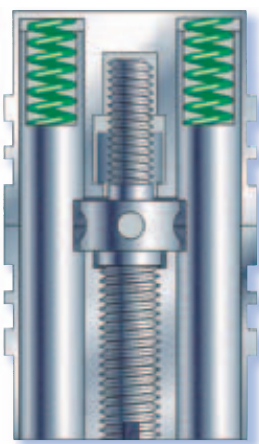
Bertoni expansion screw  
Sander II expansion screw



Protrusion screw  
Palatal split screw



**Simply unique**  
Activation of expansion screws totally controlled by clinician



**Faster Treatment**  
Faster expansion with fewer re-activations

**Intelligent forces**  
Memory screws use intelligent springs to supply continuous and constant forces

**Increased comfort**  
Physiologically correct and continuous forces increase patient comfort



Bernhard Förster GmbH · Westliche Karl-Friedrich-Straße 151 · 75172 Pforzheim · Germany  
Phone + 49 7231 459-0 · Fax + 49 7231 459-102 · info@forestadent.com · www.forestadent.com



# Take advantage of memory technology

## Memory Screws for intelligent expansion

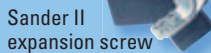
**Exclusively from  
Forestadent**



Mid line expansion screw



Bertoni  
expansion  
screw



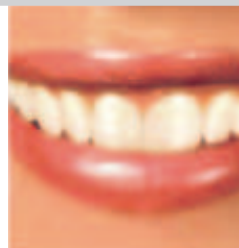
Sander II  
expansion screw



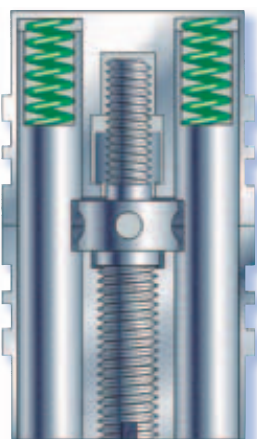
Protrusion  
screw



Palatal split screw



**Simply unique**  
Activation of  
expansion screws  
totally controlled  
by clinician



**Faster Treatment**  
Faster expansion  
with fewer  
re-activations

**Intelligent forces**  
Memory screws use  
intelligent springs to  
supply continuous  
and constant forces

**Increased comfort**  
Physiologically correct  
and continuous forces  
increase patient comfort

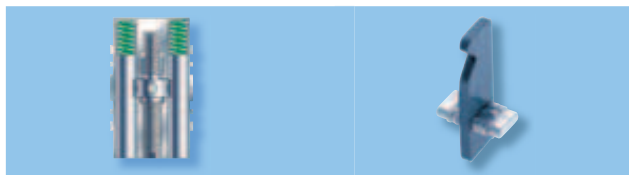


Bernhard Förster GmbH · Westliche Karl-Friedrich-Straße 151 · 75172 Pforzheim · Germany  
Phone + 49 7231 459-0 · Fax + 49 7231 459-102 · info@forestadent.com · www.forestadent.com

Forestadent USA · 2301 Weldon Parkway · St. Louis, MO 63146 · TOLL FREE 1-800-721-4940  
Fax 314-878-7604 · info@forestadentusa.com · Internet: <http://www.forestadentusa.com>

# Memory Expansion Screws

Exclusively from  
Forestadent



Mid line expansion screw

Art. Nr. 100M2015

## Memory mid line expansion screw

Memory mid line expansion screw for mandibular and maxillary expansion, second generation.

Spring extension: 0,8 mm / Spring force: 500g

Total expansion: 5 mm



Bertoni expansion screw

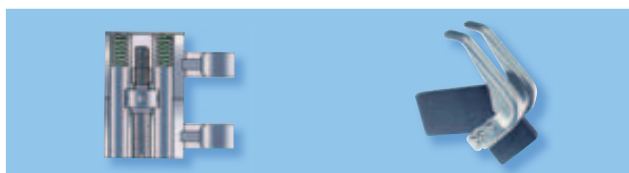
Art. Nr. 165M1413

## Memory 3D Bertoni expansion screw

Ideal for simultaneous mid line expansion and protrusion in the maxilla.

Spring extension: 0,8 mm / Spring force: 500g

Total expansion: 3 mm



Sander® II expansion screw

Art. Nr. 169M1343

## Sander® II

### Memory expansion screw for bite jumping appliance\*

The memory Sander II helps to achieve expansion 3 times faster than the conventional model.

Spring extension: 0,8 mm / Spring force: 500g

Total expansion: 5 mm



Sander® II

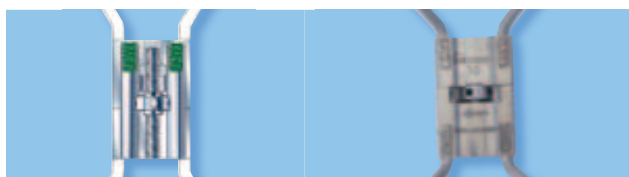
Art. Nr. 100M2016

## Sander® II mandibular memory expander

Sander II mandibular memory expander with space maintainer and jig for the design of the sloping planes.

Spring extension: 0,8 mm / Spring force: 500g

Total expansion: 5 mm



Palatal split screw N

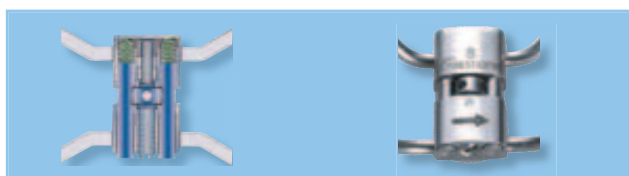
Art. Nr. 167M1529

## Memory palatal split screw type N

Memory palatal split screw for faster and more comfortable expansion by using memory technology.

Spring extension: 1 mm / Spring force: 800 g

Total expansion: 10 mm



Palatal split screw S

Art. Nr. 167M1626

## Memory palatal split screw type S

More comfortable rapid palatal expansion due to the RPE screw being placed closer to the palate.

Spring extension: 1 mm / Spring force: 500 g

Total expansion: 8 mm



Protrusion screw

Art. Nr. 179M0718

## Memory protrusion screw

Memory protrusion screw for individual/single tooth movement.

Spring extension: 0,7 mm / Spring force: 90g

Total expansion: 2,5 mm

\* Prof. Dr. F. G. Sander