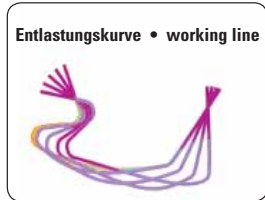
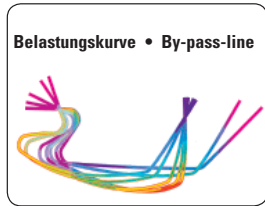
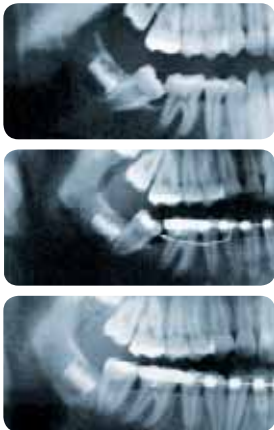
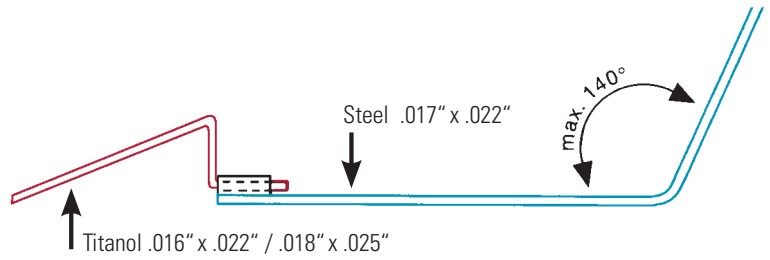


Memory Titanol®-Feder zum Aufrichten der Molaren
 Memory Titanol® Spring for uprighting of the molars

2nd Generation

Neu: 30° voraktiviert!
 New: 30° preactivated!



Aufrichtefeder

Durch den superelastischen Titanol®-Draht mit seinem Martensitplateau wirken biologisch günstige Kräfte auf das Aufrichten der Molaren.

Uprighting spring

By using the superelastic Titanol® wire with its Martensiteplateau a biological favourable low force is effective to the uprighting of the molars.

Order No. CE 0297		Inhalt contents	Beschreibung description
Slot .018" 307-1011		10 + 10	Set mit Kreuzröhrchen Set with cross tube
Slot .022" 307-1013		10 + 10	
Slot .018" 307-1010		10	Aufrichtefeder Uprighting spring
Slot .022" 307-1012		10	
Slot .018" 760-0062		10	Kreuzröhrchen Cross tube
Slot .022" 760-0063		10	
.016" x .016" 307-1009		10	Molaren-Aufrichtefeder (.016" x .016" – Stiff) Hochresilient, für Zusatzslot der Quick-Brackets Molar-Uprighting spring (.016" x .016" – Stiff) High resilient, for the auxilliary slot of the Quick brackets